



# ST. LUKE'S PLAYERS

*presents our 2018 panto*

# Sleeping Beauty



**Written by Audrey Tyson**

**Updated by Dave & Helena Hitchcock**

**Directed by Heather Lee & Helena Descoteau**

EVENING Performances at 7:30 pm

on December 14, 20, 21, 27 & 28

MATINEE Performances at 2:00 pm

on December 15, 16, 22, 23, 26, 30, 31 and January 1

## YOU'VE GOT TALENT!

Join the St. Luke's Players' team and put your skills and talents to good use! On stage or behind the scenes, our wonderful volunteers enjoy a myriad of activities while supporting the community —and having lots of fun!

[www.stlukesplayers.org](http://www.stlukesplayers.org)

### CUSHIONS ARE AVAILABLE DURING THE SHOW

Please help yourself to seat cushions  
and return them to the containers when you leave.

Thank you.

We hope this makes your evening more comfortable.



## DIRECTORS' NOTES

If I were to start this with a song, it would be *I Get By With A Little Help From My Friends*. Community theatre is a collaborative effort and this year was certainly no different. Panto is a feast for the senses and once again the audience will not be disappointed. The sights, the sounds, the participation, the action! You have it all with this incredibly amazing and talented team of actors and crew. For this, my directorial debut, I could not have asked for a more fabulous and hard working group of people to work with. I would be remiss if I didn't mention Helena, whose assistance has been both appreciated and invaluable. I know you will have as much fun enjoying the show as I have over these last few months. So boo and cheer your favourite characters and sing along to the happiness! Seasons Greetings to you all and enjoy the magic of panto! Let's go, on with the show!

### **Heather Lee** – Director

Heather is proud to be a member of St Luke's Players. Coming from a musical background, past roles include *Sybil*, *Separate Tables*; *Jane*, *Bull In A China Shop*; *Cecily*, *Prepare to Meet Thy Tomb*; *Buttons*, *Cinderella*; *Wishee Washee*, *Aladdin*; *Hook*, *Mother Goose*; *Silly Billy*, *Snow White*.

A Big Thank You to you, the audience, for making all experiences grand! Let's Go on With the Show!



### **Helena Descoteau** – Music & Co-Director

This is Helena's first time in the shoes of the music director and assistant director; many thanks to Heather and the fabulous cast for embarking on the journey with her! Helena's previous productions with St. Luke's Players include *Aladdin* the panto (Princess Jasmine) and *A Murder is Announced* (Co-producer), and she served on their executive board for the 2017/18 season. When not on or offstage with St. Luke's Players, Helena is a singer/songwriter.



A special thanks to: Langham Court Theatre, Rev. Daniel Fournier and Bonnie Watkin's contributions and support from St. Luke's Church; Sharon Hallsor, the Times Colonist, Merry Hallsor, Wendy Henderson, The Papery, and all those wonderful people who volunteer in concession, front of house and elsewhere. The show couldn't go on without you!

## MOST AWESOME CAST

Narrator . . . . .	Mike Chadwick
Scratchi . . . . .	Carl Powell
King . . . . .	John Sease
Queen . . . . .	Pamela Holmes
Lady Purl . . . . .	Maria Smith
Lady Plain . . . . .	Ariel Fischer
Lady Twist . . . . .	Misu Tat
Titania . . . . .	Steve Eastman
Fairy Clean . . . . .	Ella East
Fairy Green . . . . .	Anabel Gibson
Fairy Lean . . . . .	Ava Fournier
Fairy Mean . . . . .	Penny Pitcher
Fairy Teen . . . . .	Charlotte Scholefield
Nursemaid (Nursey) . . . . .	Trisha Tonkin
Messenger . . . . .	Gail Straughan
Princess Magnolia . . . . .	Olivia Bowyer-Smythe
Prince Charming . . . . .	Luc Steele
Auntie Biotics . . . . .	Beverly van Druten-Blais

### Chorus

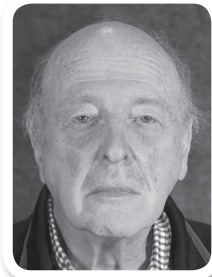
Lorraine Autajay, Sophie Bowyer-Smythe, Brandon Fournier,  
Gemma Holmes-Burnham, Olivia Lassam, Grace Mickelson,  
Becca Wilmshurst

**Albert the Horse/Albertson:** Elodie Adams & Jaqueline Gillespie

---

## **Mike Chadwick** – *Narrator*

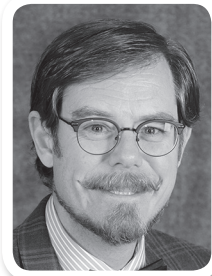
This role is perfect for the actor who loves the adulation of the audience, but hates costumes and makeup. The script demands that he has the script in his hand on stage and that he appears from the street without costume or makeup. Thank you so much St. Luke's Players for casting me in the part I have always wanted.



---

## **Carl Powell** – *Scratchi*

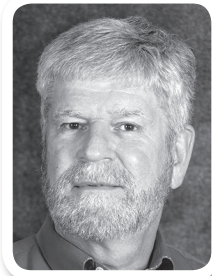
This is the fourth production Carl has been a part of with St. Luke's Players, previously performing in *Mother Goose Panto*, *Bull in a China Shop* and *The £12 Look*. He very much appreciates the family atmosphere with St. Luke's Players and feels privileged to be a part of this show with such a wonderful cast and crew. He hopes you laugh often and loud and have a great time.



---

## **John Sease** – *King*

John Sease is in his premier role with St. Luke's Players, having honed his stage skills as a Wildlife Biologist in Alaska and Vermont. No, that doesn't make any sense to me either! John previously performed with the Dorset Players (Vermont) in shows including *Miracle on 34th Street*, *She Loves You*, *HMS Pinafore*, *The Importance of Being Ernest*, *Les Mis*, *Miss Saigon*, *The Cocktail Hour*, and several One Act Festivals. Love those Panto Ferries, er FAIRIES!



---

## **Pamela Holmes** – *Queen*

Solution to a sold-out panto: join the panto! Pamela is glad to be back on the panto stage with so many great collaborators — on- and back-stage, and at the back of the house, bringing the show to life.



---

## **Maria Smith** – *Lady Purl*

Once upon a time a little girl went to her first panto, *Sleeping Beauty*, and 10 years later the little girl is in her fourth St. Luke's Players production, the latest version of that same story. Maria plays competitive softball, is creative in the kitchen, and enjoys exploring new travel destinations. Thanks to her "panto family" for their help and support.



---

## **Ariel Fischer** – *Lady Plain*

Ariel Fischer is a grade 7 student at Monterey Middle School and this year is performing in her third Christmas panto. Ariel is learning to play the bass because it is the least convenient instrument offered in school band programs, participates in many school activities and takes dance classes. When this year's panto concludes Ariel will be focussing her attention on math, and lots of it.



---

## **Misu Tat** – *Lady Twist*

Misu is thrilled to be in this year's panto! She has been featured in the CBC class music challenge and was in a school musical.



---

## **Steve Eastman** – *Titania*

*Sleeping Beauty* is Steve's twelfth panto and his seventh with St. Luke's Players. Thanks to all who have made this another magnificent experience. To those of you out there taking in the show, enjoy your trip through our land of enchantment!



---

## **Ella East** – *Fairy Clean*

Ella is excited to be performing in her third Panto with St Luke’s Players! When she’s not at the theatre, Ella is attending grade 8 at Cedar Hill Middle School, playing trombone in concert and jazz band, singing in concert choir and vocal jazz ensemble and attending cheerleading competitions. Ella hopes you’ll enjoy the show as much as she does!



---

## **Anabel Gibson** – *Fairy Green*

Anabel is ecstatic to be playing Fairy Green in *Sleeping Beauty*, her 3rd panto. Having just recently starred in a short film called *Out of Sound*, joining the Island Show Choir, participating in both choir and band at Glanford Middle School, playing basketball, and being in the panto, Anabel is a very busy girl. She hopes you enjoy the show as much as she liked doing it!



Remember to reduce, reuse, and recycle!!

---

## **Ava Fournier** – *Fairy Lean*

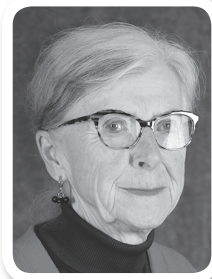
Ava who plays Fairy Lean is a 13-year-old student at Central middle school with aspirations of being an architect. Ava has been involved in the theatre for a few years including such plays as *Alice in Wonderland*, *The Original Deed* and *Fiddler on the Roof*.



---

## **Penny Pitcher** – *Fairy Mean*

Penny is relishing her role as Fairy Mean—such power to silence people for 100 years! Since moving to Victoria, Penny has played Mama Bear in St. Luke’s Players’ *Goldilocks* and Lady Matheson in *Separate Tables*. She also appeared on the Langham stage in *Harvey* and *The Crucible* and has played a variety of roles with Shakespeare-by-the-Sea and Readers’ Theatre. Penny acts with Target Theatre, an ensemble of actors, 55+, using theatre to address seniors’ issues.



---

## **Charlotte Scholefield** – *Fairy Teen*

Charlotte Scholefield has been taking theatre classes at SKAM School of Performing Arts, formerly Kate Rubin Studio, since she was six years old. Her experience includes performing, writing, and back stage work such as making costumes, sets, and props. Now thirteen, this is her first appearance with the St. Luke's Players.



---

## **Trisha Tonkin** – *Nursemaid (Nursey)*

This is Trisha's first time up on stage performing during Panto Season. She is usually found behind the spotlight, helping to make the actors shine!

She is enjoying every moment of playing the role of "Nursey" and hopes you enjoy the performance.



---

## **Gail Straughan** – *Messenger*

This is Gail's fifth appearance with St. Luke's Players. She's performed in *Alice in Wonderland*, *Welfarewell*, *Victoria's House*, *Bedtime Stories* and now *Sleeping Beauty*. Live theater has been a passion since her school years when she performed in many plays. She hopes to be in many more in the future.



---

## **Elodie Adams** – *Albert/Albertson the Horse*

A horse is a horse, of course, of course, that is of course unless the horse is the famous Albert! Returning to Panto after a long absence—but this time in disguise (and thankfully at the front end)—Elodie is happy to reconnect with like-minded theatre people for a "neigh"-bourly good time over Christmas.



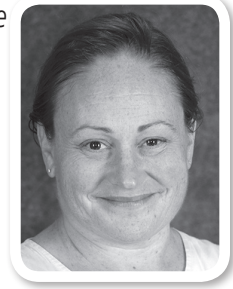


---

**Jaqueline Gillespie** – *Albert/Albertson the Horse*

Yes she is the rear end, but it's all good.

By day she's Mrs. G who teaches English and Social Studies at Oak Bay Secondary. Jaqueline's been in pantos before but this is her first with St. Luke's Players.



---

**Olivia Bowyer-Smythe** – *Princess Magnolia*

Olivia is excited to take the role of Sleeping Beauty in this year's St. Luke's Players' Panto. She is 13 years old and is a grade eight student at Monterey Middle School. Olivia enjoys singing and playing her ukulele; she also plays double bass and electric bass. Olivia is grateful for all the support from the St. Luke's Players team. She has had a great time working with everyone and hopes that you enjoy the show!



---

**Lorraine Autajay** – *Chorus*

Lorraine has always been musically and artistically inclined. She plays several musical instruments, is always willing to sing to anyone who will listen and regularly acts different characters in front of a mirror. This panto gives her an opportunity to show her talent. It is her first time to join such a production and will definitely not be her last.



---

**Sophie Bowyer-Smythe** – *Chorus*

Sophie Bowyer-Smythe is excited to be part of this year's pantomime. She is a grade 5 student at Willows Elementary. When not on stage, Sophie is on the ice, playing hockey for the Victoria Ice Hawks. Also, she plays piano and sings in the school choir.



---

## Grace Mickelson – Chorus

Grace is a grade 6 student. This is Grace's first panto with St. Luke's Players. Besides acting she likes to play soccer and ride horses. Grace would like to thank the cast, crew and her family for this enjoyable opportunity. Enjoy the Show!



---

## Gemma Holmes-Burnham – Chorus

This is Gemma's second panto with St. Luke's Players, and it is very fun. (That's very, not fairy.) She apologizes for the bad jokes, and hopes you enjoy the show!



---

## Olivia Lassam – Chorus

Olivia is 6 years old and is in grade 1. She is passionate about drama and theatre and this is her first performance. She likes art, dancing, rainbows and her favourite animal is a unicorn. She enjoys candy canes and Christmas. When she's not preparing for the pantomime she spends her time being a big sister and playing on the monkey bars!



---

## Brandon Fournier – Chorus

Brandon who plays a raccoon is a nine-year-old student at James Bay elementary whose first passion is soccer but loves the theatre. Brandon has performed in the play *Original Deed*, and the Netflix movie *Pupstar Christmas*.



---

## Becca Wilmshurst – Chorus

Becca is loving being part of this fun panto. She is 5 years old and literally sings and dances all the time. One day she may be a rock star.



---

## Luc Steele – Prince Charming

Luc Steele is thoroughly enjoying his debut in *Sleeping Beauty* with St. Luke's Players. In the past he has performed in *Otello* and *The Barber of Seville* with POV and sung in CappriCCio Vocal Ensemble here in Victoria. He enjoys rugby, hiking, and singing. He would like to thank Lia Collis for bullying him into auditioning and helping him adapt to the uniqueness of the panto stage.



---

## Beverly van Druten-Blais – Auntie Biotics

*Sleeping Beauty* will be Beverly's sixth panto, but first time in the sweet role of a good fairy. Recently she skipped the 'light fantastic' in *The Mikado* with the Victoria Gilbert and Sullivan Society. She's 'crafty' and likes to design and create her own costumes, accessories and props. Thrilled to see you all here today, we all hope you find some joy and laughter to sparkle up your holiday season.



Best wishes to St. Luke's Players  
for a successful Christmas Panto!

*Boutique de Laine*

Located in Estevan Village  
for all your knitting needs

Gift Certificates available



## MOST EXCELLENT PRODUCTION TEAM

Director .....	Heather Lee
Music/Co-Director.....	Helena Descoteau
Co-Producers .....	Mike Chadwick, Bronwyn Taylor
Stage Manager .....	Sheila Mackenzie
Assistant Stage Manager & Prompter .....	Joel Gibson
Choreographer.....	Lia Collis
Set Design .....	Helena Hitchcock
Muralist .....	Dale Hitchcox
Painting and Set Decor.....	Judy Bell, Jean de Cartier, Merry Hallsor, Ann Harris, Helena Hitchcock, Dale Hitchcox, Elaine Lewis, Janine Longy, Linda MacNaughton, Martha McNeely, Betty Sherwood, Anne Swannell
Lighting Design.....	Brad Willoughby
Sound Design .....	Mitch Barnes, Guy Blais
Costumes .....	Jaqueline Gillespie
Costume Assistants.....	Jean de Cartier, Kate Wells
Props .....	Jean de Cartier
Props Assistants .....	Susan Ellis, Linda MacNaughton, Beverly van Druten-Blais
Set Construction .....	Susan Ellis, Paul Hawkes-Frost, Dave Hitchcock, Helena Hitchcock, Don Lambton, Jim Lambton, Ric Johnson, Denis Matthews, Jerry McIntosh, Neville Owen, Simon Skey
Lighting Operators.....	Craig Balmer, Katie Desmond, Joanne Frappell, Carol-Anne Moore
Sound Operators.....	Guy Blais
Hair/Make-up .....	Tamara Malczewska
Backstage Crew.....	Niko Batinovic
Lobby Display/Programme .....	Beverly van-Druten Blais
Publicity.....	Janine Longy, Maegan Bercovicci
Front of House .....	Bronwyn Taylor
Concession Manager .....	Susan Nicholl
Executive Liaison.....	Susan Nicholl
Greenroom Assistants .....	Sharon Bowyer-Smythe, Erica East, Terina Fournier, Morgan & John Lassam, Joanna Mickelson

Many thanks to these and the rest of the wonderful volunteers who worked so hard designing, creating, building, promoting and organizing to bring you this magical show.



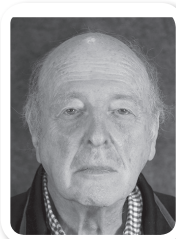
**Heather Lee**  
*Director*



**Helena Descoteau**  
*Music & Co-Director*



**Bronwyn Taylor**  
*Co-Producer*



**Mike Chadwick**  
*Co-Producer*



**Sheila Mackenzie**  
*Stage Manager*



**Joel Gibson**  
*Assistant Stage Mgr*



**Lia Collis**  
*Choreography*



**Jaqueline Gillespie**  
*Costumes*



**Helena and Dave Hitchcock**  
*Set Design & Construction*



**Brad Willoughby**  
*Lighting Design*



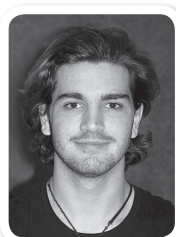
**Mitch Barnes**  
*Sound Design*



**Guy Blais**  
*Sound Design/Operator*



**Jean de Cartier**  
*Properties*



**Niko Batinovic**  
*Super Stagehand*



*Some of St. Luke's Players' magic makers caught in the act. They totally rock, don't they?! Love those sets!*

# AUDITIONS

For a tantalizing murder mystery  
Everyone welcome to try out!

written by C.P. Stancich

directed by Geoffrey Davidson

## Sherlock Holmes and the Spinsters of Blackmead

Thurs Jan 3 or

Sat Jan 5 at 7pm,

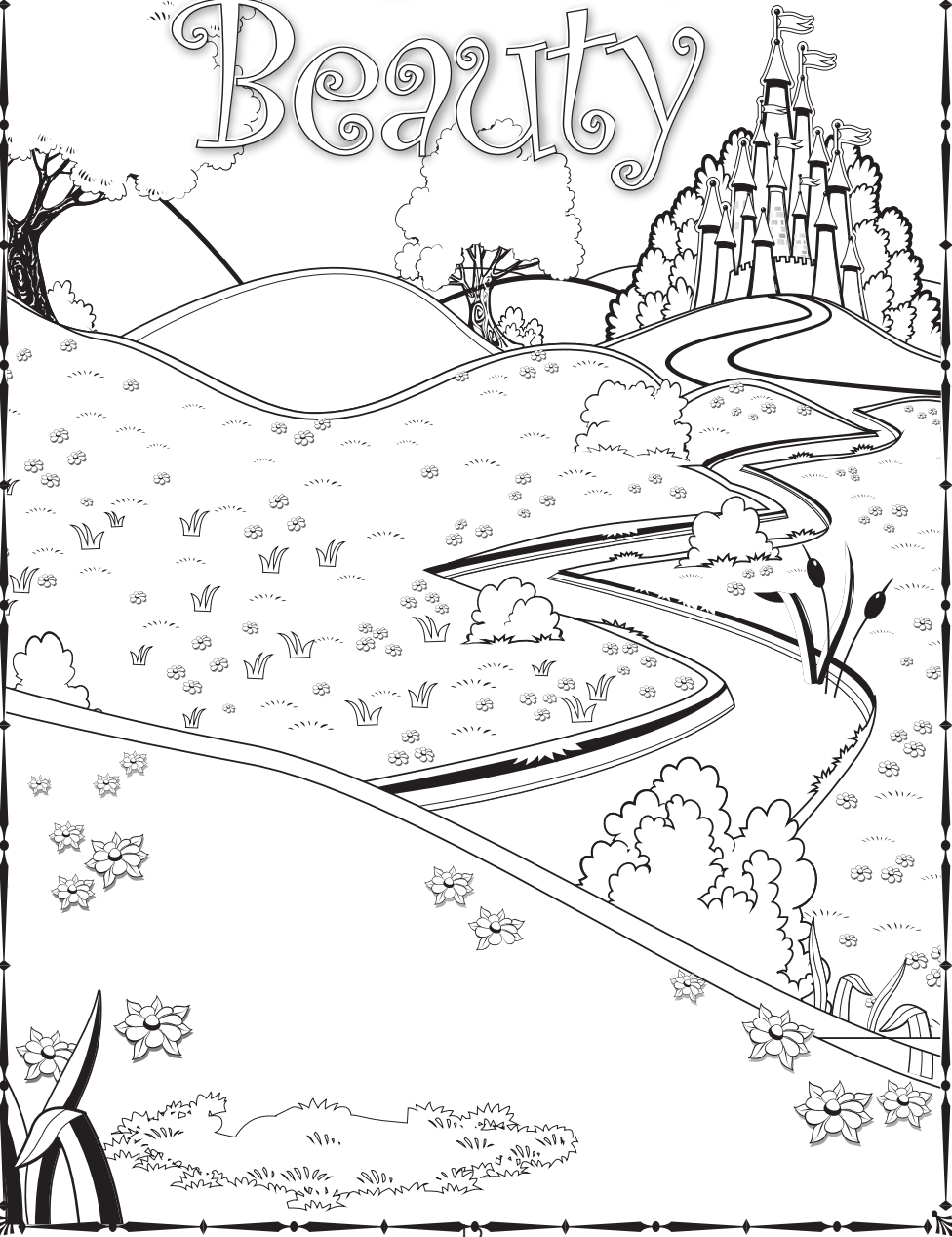
or Sun Jan 6 at 2pm

No appointments are necessary,  
just show up promptly at the start time.



# Sleeping Beauty

COLOURING  
PAGE





# ST. LUKE'S PLAYERS

COMMUNITY THEATRE SINCE 1948!

*You must see the rest of our awesome 70th Season!*

## Sherlock Holmes

A TANTALIZING MURDER MYSTERY

## and the Spinsters of Blackmead

by C.P. Stancich

directed by Geoffrey Davidson

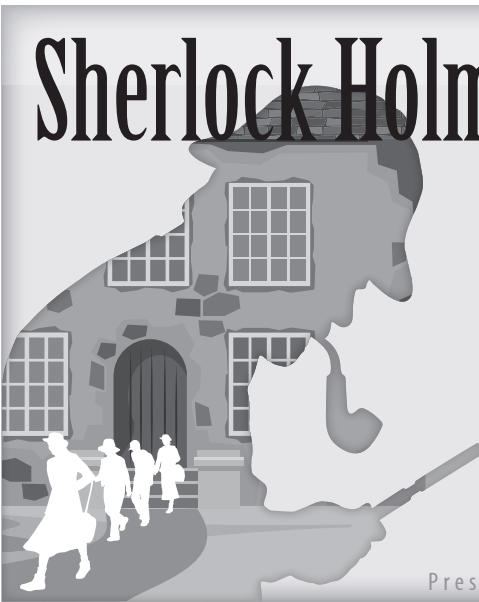
Evenings 7:30

Mar 13–16, 20–23

Matinees 2:00

Mar 16, 17, 23 & 24

Presented with Heuer Publishing



A HEARTWARMING  
COMEDY

## Things My Mother Taught Me

written by

Katherine Di Savine

directed by

Penelope Harwood

Evenings 7:30

May 22–25, 29–June 2

Matinees 2:00

May 25, 26 & June 1 & 2

Presented with Samuel French

