



ST. LUKE'S PLAYERS

COMMUNITY THEATRE SINCE 1948!

Presenting the season finale, a suspenseful murder mystery:



written by
Vera Casperly & George Sklar
directed by Don Keith

Evening Performances 7:30pm
May 16, 17, 18, 19, 23, 24, 25 & 26

Matinee Performances 2:00pm
May 19, 20, 26 & 27

"Laura" is presented by special arrangement with DRAMATISTS PLAY SERVICE INC.

PRODUCTION TEAM

| | |
|---|--|
| Director: | Don Keith |
| Assistant to the Director: | Anton Brakhage |
| Producers: | Vinnie Chadwick & Bronwyn Taylor |
| Stage Manager: | Dave Hitchcock |
| Assistant Stage Manager: | Paul Hawkes-Frost |
| Set Design: | Don Keith |
| Set Décor & Painting: | Sally Crickman |
| Portrait of Laura: | Anne Swannell |
| Set Construction: | Paul Hawkes-Frost, Dave Hitchcock, Helena Hitchcock, Don Lambton, Jim Lambton, Denis Matthews, Neville Owen, Don Keith and Simon Skey |
| Set Painting: | Sally Crickman, Ann Harris, Merry Hallsor, Elaine Lewis, Deb Taylor |
| Props: | Linda MacNaughton |
| Props Assistant: | Elaine Lewis |
| Lighting Design: | Paul Hilton |
| Lighting Operators: | Niko Batinovic, Trish Tonkin, Deb Laverty |
| Sound Design: | Nicholas Miller |
| Sound Operators: | Mason Halsan, Gus McFids |
| Costume Design: | Wendy Henderson |
| Prompter: | Susan Nicholl |
| Hair & Make-up: | Vinnie Chadwick |
| Photos/Lobby Display & Program Design: | Beverly van Druten-Blais |
| Publicity: | Helena Descoteau, Janine Longy |
| Concession Manager: | Susan Nicholl |
| Front of House Manager: | Mike Chadwick |

PLAY LOCATION

SETTING:

The play takes place in the living room of a third floor apartment on the Upper East Side of New York.

TIME:

Act 1 – An evening in August

Intermission 15 minutes

Act 2 – The next morning

Intermission 5 minutes

Act 3 – That night

PLAY SUMMARY

Detective Mark McPherson investigates the killing of Laura, found dead on her apartment floor before the play starts. McPherson builds a mental picture of the dead girl from the suspects whom he interviews. He is helped by the striking painting of the late lamented Laura hanging on her apartment wall. But who would have wanted to kill a girl with whom every man she met seemed to fall in love? To make matters worse, McPherson finds himself falling under her spell too. Then one night, halfway through his investigations, something seriously bizarre happens to make him re-think the whole case.

Susan Salomonsson
Chartered Professional Accountant
Tel: +1-778-433-5848

DIRECTOR'S NOTES

While LAURA is a story that many are familiar with through the classic film, the play will offer audiences some new and exciting surprises. Although it takes place in 1940's New York City, it's a surprisingly modern story that makes keen observations about gender roles, especially the expectations that society had and continues to impose upon women, and the frightening effects of toxic masculinity. That, coupled with the romantic mystique of the noir style and the tension of a top-notch psychological thriller, makes LAURA a piece I am excited to work on and share with an audience.

Don Keith – Director

Well known for his large-scale musicals and award winning plays, Don has developed a reputation for producing challenging productions in the high school, community theatre, university and professional stages.

A Theatre Teacher and artist since 1971, he was the recipient of a National Award for Leadership in Education recognizing his contribution to the development of the Theatre Program and Performing Arts Centre at Kelowna Secondary School. He is the recipient of the Drama Teacher of the Year Award in 1999 from the Association of B.C. Drama Educators.

He is a life member of Theatre Kelowna Society where he directed many award winning plays and large cast musicals.

He has designed many sets at St. Luke's and Langham Court Theatre, most recently *The Girl in the Gold Fish Bowl*.

Don will direct *Noises Off* next year for the 90th anniversary of Langham Court Theatre

When not designing or directing he is a Tour Guide in Victoria.



A special thanks for contributions and support to: St. Luke's Church: Rev. Daniel Fournier, Sharon Hallsor and Bonnie Watkins; Langham Court Theatre, the Times Colonist, Saanich News, John Fear, Jean de Cartier and all those wonderful people who volunteer in concession, front of house and all over the place.

LAURA CAST BY APPEARANCE

Mark McPherson Jonathan Ure Stoppi

Danny Dorgan Daniel Gallant

Waldo Lydecker Bill Tolson

Shelby Carpenter Geoffrey Davidson

Bessie Clary Julie Gray

Mrs. Dorgan. Beverly van Druten-Blais

The Girl Colleen Davis

Olsen. Anton Brakhage

A poster for auditions for the play 'Nightwatch'. The title 'AUDITIONS NIGHTWATCH' is at the top in large, bold, white letters. Below it, 'A SUSPENSEFUL THRILLER' is written in smaller white letters. The background is black with white splatters and a white silhouette of a person's head and shoulders. The text is arranged in a column on the left and right sides of the poster.

AUDITIONS
NIGHTWATCH
A SUSPENSEFUL THRILLER

Written by
Lucille Fletcher

directed by
Neville Owen
Janine Longy

Fri Aug 17 • 7pm or
Sat Aug 18 • 2pm
Callbacks: Sun Aug 19 • 2pm
Play runs Oct 10–21

No appointments are necessary,
just show up promptly at the start time.
Contact directors if you need an alternate audition date.
Rehearsals: Mon, Wed & Fri evenings

 **ST. LUKE'S PLAYERS** The first show of our
new 2018/19 Season

All auditions are held at St Luke's Hall, 3821 Cedar Hill X Rd • Like us on Facebook
Website: www.stlukesplayers.org • Phone: 250-884-5484 • Email: stlukesplayers@yahoo.ca

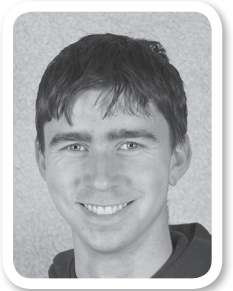
Jonathan Ure Stoppi – *Mark McPherson*

Jonathan's portrayal of the detective in *Laura* is a step up from his previous appearance with St. Luke's Players as Nick the burglar in *Bedtime Stories*. Prior to that, he appeared as Avram in Bema Productions' *The Best Meal You Ever Ate*—and before that as a soldier, kibbutz farmer, architectural designer, CAD specialist, and Hebrew-English translator and editor (with varying degrees of success) at the Theatre of Real Life.



Daniel Gallant – *Danny Dorgan*

Daniel Gallant is an 18 year old student of Claremont Secondary, and this is his first time working with St. Luke's Players. He starred recently in Kaleidoscope Theatre's pantomime production of *Peter Pan*, and in Claremont's musical production of *Annie*, as Rooster. He also enjoys competitive improvised theatre. He's learning a lot from his time in this production, and hopes you enjoy the show.



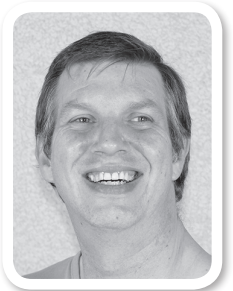
Bill Tolson – *Waldo Lydecker*

Bill's dream role has come. He gets to be sarcastic and snobbish in a murder mystery. Since his retirement in 2015, Bill has had a fulfilling time being involved in local theatre, both on stage and backstage, in several venues. He would like to thank the producers of *Laura* for casting him in this noir play.



Geoffrey J. Davidson – *Shelby Carpenter*

Geoffrey was last seen playing Derek in Norm Foster's, *Bedtime Stories* and is pleased to be making his return to the St. Luke's Players' stage. Prior roles include: Barney Cashman in Neil Simon's *The Last of the Red Hot Lovers*, Terry (and guests) in *Fawlty Towers*, co-starred in *Love's Labours Lost*, and Antigonus in *The Winter's Tale*. Geoffrey holds a B.A. in Theatre Arts from Dordt College.



Julie Gray – *Bessie Clary*

Oh dear...could Bessie have done it? If so, she will “have to go to confession!” What a lovely script to keep you guessing right until the end! Julie is privileged to act as “the help” in her first whodunit with St. Luke’s Players. She has previously had the pleasure of participating in several Christmas pantos, worked with Theatre Inconnu, Shakespeare by the Sea, Four Season’s Musical Theatre and Langham Court Theatre. A special shout out to the entire crew.



Beverly van Druten-Bais – *Mrs. Dorgan*

Beverly started the fall season singing, laughing and playing in *Pirates of Penzance* with the Victoria Gilbert and Sullivan Society. Recently seen on this stage tiring her way through *Bedtime Stories*, she is now haughtily interjecting herself into a murder mystery. What next? Auditioning for the VGSS *Mikado*, that’s what. This is all too much fun. Enjoy!



Colleen Davis – *The Girl*

Colleen has been treading the boards for over 15 years, and just can’t get enough of St. Luke’s Players. Recent roles include Miss Cooper from *Separate Tables*, Victoria from *Victoria’s House*, and Val from *Welfarewell*. This is her most challenging role yet. She’s enjoyed discovering and bringing life to the vast nuances of a character that she doesn’t see much of herself in—but her husband may beg to differ.



Anton Brakhage – *Olsen*

Anton is a former film student from Toronto who is glad to be appearing in his first show with St. Luke’s Players. His previous roles include Willard in *The Crucible* at Langham Court Theatre, various roles in *The Good Soldier Schweik* at Theatre Inconnu, and many appearances in Readers’ Theatre at Langham Court. Anton thanks St. Luke’s Players and the excellent cast and crew of *Laura*.



LOOK WHAT OUR NEXT SEASON HAS IN STORE FOR YOUR ENJOYMENT!

A CAPTIVATING THRILLER

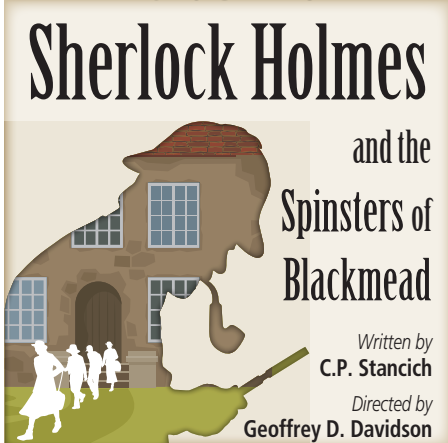


Is Elaine Wheeler really seeing dead people in the window across the way? No one believes her, including her husband, a psychiatrist, and her old friend and houseguest. Add an inquisitive and rather strange neighbour, and a nosy German maid and the suspense and mystery deepen towards a riveting and chilling climax.

Evenings 7:30 - Oct 10-13, 17-20

Matinees 2:00 - Oct 13, 14, 20 & 21

A TANTILIZING MURDER MYSTERY



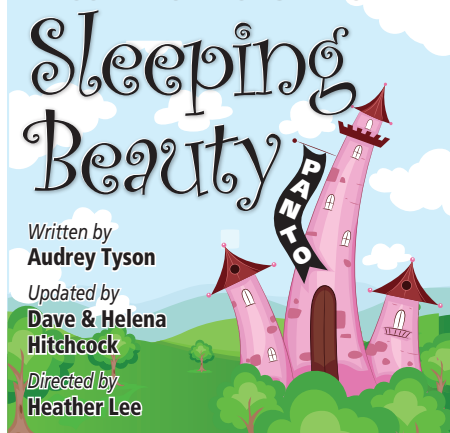
Someone is murdering the women of Blackmead Manor, a fiercely independent female academic community. Sherlock Holmes and Dr. Watson are drawn into the case and find their reception as sticky as the mystery they must solve. A dead servant, a missing person and links to Moriarty ensue. Is this merely another interesting case or a fatal trap for Holmes himself?

Evenings 7:30 - Mar 13-16, 20-23

Matinees 2:00 - Mar 16, 17, 23 & 24

Night Watch presented with DRAMATISTS PLAY SERVICE INC., Sherlock Holmes and the Spinsters of Blackmead by Heuer Publishing, Things My Mother Taught Me presented with Samuel French

A FAVOURITE FUN FROLIC PANTO

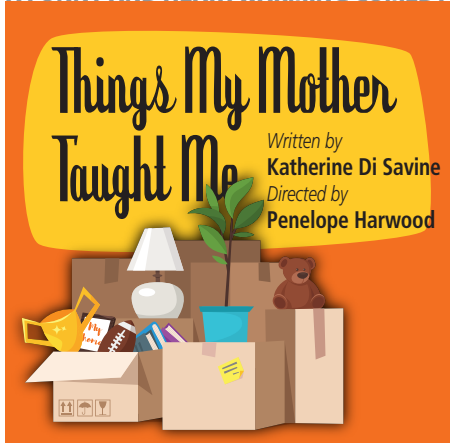


The celebration of a new darling baby princess. A nasty curse from an uninvited guest and the banishment of pins from the land. Join in on what happens next "Panto-style" as the day is saved with singing, dancing, lame jokes and silly, good fun.

Evenings 7:30 - Dec 14, 20, 21, 27 & 28

Matinees 2:00 - Dec 15, 16, 22, 23, 26, 30, 31 & Jan 1

A FUNNY AND HEARTWARMING COMEDY



Olivia and Gabe are moving into their first apartment together. They've driven halfway across the country to start their new life in Chicago. Can a two bedroom apartment contain all of the love, laughs, worry and wisdom when both sets of parents show up to help? A funny and touching generational look at relationships.

Evenings 7:30 - May 22-25, 29-Jun 2

Matinees 2:00 - May 25, 26 & Jun 1, 2