



ST. LUKE'S PLAYERS

COMMUNITY THEATRE SINCE 1948!

presents our 2017 panto

Cinderella



Written by Dave & Helena Hitchcock
Directed by Neville Owen & Janine Longy

EVENING Performances at 7:30 pm
on December 15, 20, 21, 22, 27 & 28

MATINEE Performances at 2:00 pm
on December 16, 17, 23, 26, 30, 31 and January 1

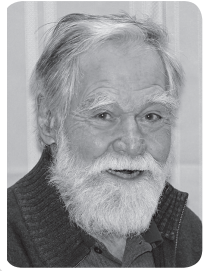
DIRECTORS' NOTES

A Panto is different from other plays—as it affords the opportunity to engage the audience and presents broad colourful characters. As always with St. Luke's Players it's a team effort. Janine has been so easy to work with, she understood my many ramblings. ~ Neville Owen

Pantos are magical and heartwarming: a true family experience for the audience, the cast and the crew. This year it has been a pleasure to welcome new actors, crew and enjoy friends from past productions. As a new director, I am amazed and impressed by the cast and crew talent. I am very grateful for the long hours and dedication provided by all to make this show a success. We are truly a community theatre at its very best. I have enjoyed every day and everyone involved. We have worked hard and most of all we have had fun. I want to express a special thank you to Neville Owen for inviting me to co-direct with him. He is a wonderful mentor and friend. ~ Janine Longy

Neville Owen – *Co-director*

Neville has been involved with SLP for years, either directing, acting poorly, building sets or just working. He is very pleased to be directing with Janine who kept him focused on several occasions. And to the talented cast and crew of Cinderella many thanks. He sends an especially large thanks to Cher who, as always, has been very supportive.



Janine Longy – *Co-director*

Janine became involved with community theatre after she retired. Her first role was with the Nanaimo Theatre Group. After moving to Victoria in 2010, she continued her involvement: acting, workshops, and coaching. The highlight was for her to be cast in four Pantos. And now, what fun to be directing!



A special thanks to: Langham Court Theatre, Rev. Daniel Fournier and Bonnie Watkin's contributions and support from St. Luke's Church; Sharon Hallsor, the Times Colonist, Linda MacNaughton, Beverly van Druten-Blais, The Papery, St. Aiden's Church and all those wonderful people who volunteer in concession, front of house and elsewhere. The show couldn't go on without you!

PRODUCTION TEAM

Co-directors:	Neville Owen & Janine Longy
Co-Producers:	Vinnie Chadwick & Bronwyn Taylor
Stage Manager	Susan Nicholl
Assistant Stage Manager	Joel Gibson
Musical Directors:	Heather Lee, Connie te Kampe
Choreographer	Lia Collis
Set Design	Dave & Helena Hitchcock
Scenic Design & Painting	Anne Swannell
Lighting Design	Blake Handley, Max Terpsta
Sound Design	Mitch Barnes, Connie te Kampe
Costume Design	Wendy Henderson
Props	Jean de Cartier
Set Construction	Neville Owen, Dave Hitchcock, Helena Hitchcock, Paul Hawkes-Frost, Martha McNeely, Denis Matthews, Jerry McIntosh, Simon Skey, Jon Scheer, Terry Oliver
Set Painters	Anne Swannell, Ann Harris, Susan Nicholl, Merry Hallson, Judy Bell, Elaine Lewis, Janine Longy, Betty Sherwood, Jean de Cartier, Martha McNeely
Prompter	Joel Gibson
Lighting Operators	Jennifer Illingworth, Carol-Anne Moore
Spot Light Operators:	Ian te Kampe, Trisha Tonkin, Geli Bartlett
Sound Operator:	Ben Turner, Gloria Gensey
Hair/Make-up:	Colleen Davis, Tamara Malczewska, Devon Brownsey
Backstage Crew:	Bruce Dow
Photography:	Beverly van Druten-Blais, John Lockyer
Lobby Display & Programme Design	Beverly van Druten-Blais
Publicity	Janine Longy & Helena Descoteau
Front of House	Bronwyn Taylor
Concession Manager	Vinnie Chadwick
Greenroom Monitors	Kim Yuskaitis, Erica East, Rowan Bercovici, Kathleen Dow

CAST

Cinderella Trinity Dowling
Prince Charming . . . Robin Dykes
Lucinda Steve Eastman
Florinda Mike Chadwick
Baron Hardup Roland Wille
Baroness Hardup Theodora
Malczewska
Buttons Heather Lee
Dandini Maegan Bercovici
Tinkerbell Jan Streader
Landlady Pamela Holmes

Mice:

Abby Leahy, Aisha Haq,
Lily Dow, Nyah Brown,
Gemma Holmes-Burnham

Friends, Tree Spirits, Chorus:

Maria Smith, Anabel Gibson,
Olivia Bowyer-Smyth, Violet
Brownsey, Ella East, Ariel Fischer

Daisy Cow, Horse:

Marian Fischer, Dexter Gilbert
DJ, Footman Niko Batinovic

Proud to Support Local Theatre

Susan Salomonsson

Chartered Professional Accountant

778.433.5848

sdb.ca@susandiane.ca



Best wishes to St. Luke's Players
for a successful Christmas Panto!

Boutique de Laine

Located in Estevan Village
for all your knitting needs

Gift Certificates available



Trinity Dowling – *Cinderella*

Excited to be performing in her first leading role as Cinderella, Trinity, a sophomore at Oak Bay High School, has appeared in the choruses of *Legally Blonde* and *Anything Goes*. She hopes to attend Law School after graduation and wants to continue to seek out acting opportunities. Many thanks to her parents encouragement to pursue her dreams, listening to her practice “a dream is a wish” every waking hour. She is also profoundly grateful to directors Janine and Neville for their faith in her. She hopes you enjoy the show as much as she enjoys performing it.



Robin Dykes – *Prince Charming*

Robin is in grade 12 at Mount Douglas Secondary. Although this is their first panto, they have been in two musicals with school, and enjoy acting, singing, and dancing. Robin has been to see many St Luke’s pantos with their family and is excited to be onstage this year.



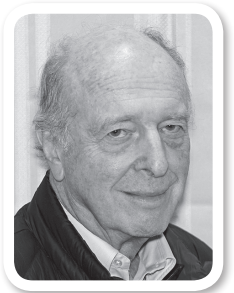
Steve Eastman – *Lucinda*

Cinderella is Steve’s eleventh Panto and his sixth with St. Luke’s Players. Thanks to all who have made this another magnificent experience. To those enjoying the show, continue...



Mike Chadwick – *Florinda*

Mike casts off his evil villain role, puts on his bra and turns into a thing of (doubtful) beauty to appear as an ugly sister to which his looks, if not his figure, are well suited.



Roland Wille – *Baron Hardup*

For a third time in 2017 Roland is pleased to be acting in yet another fun-filled St. Luke's Players' production, this time as the troubled Baron. Ironically, having avoided the YMCA song for 40 years, he gets to enjoy it now in *Cinderella* and again in January with Mountain Dream Productions *Little Stars*.



Theodora Malczewska – *Baroness Hardup*

Theodora is new to the stage. Her last debut was when she was eight and featured as Mary Poppins. She comes from a large family of performers and has been watching theatre as a fan all her life. She has not missed a Pantomime since she was born. She is very excited to be part of the show.



Heather Lee – *Buttons*

Coming from a background of performing in musicals, Panto is a wild and wonderful addition to the repertoire! Silly Billy, Hook, and Wishee Washee being among her Panto characters, other SLP performances have been *Sybil*, *Separate Tables*; *Jane*, *Bull in a China Shop*; and *Cecily, Prepare to Meet thy Tomb*. Working with this cast and crew has been altogether rewarding and energizing. How wonderful to be amongst such fabulous cast and crew, and to have an audience like you!



Maegan Bercovici – *Dandini/Cat*

Maegan loved taking part in the Christmas Panto last year and is excited to be back again this year! The fun energy of St. Luke's Players is like no other! Chock-full of talented people and good times! After doing some more theatre and film work in the past year, she's happy to be back!



Jan Streader – *Tinkerbell/Fairy Godmother*

Previously seen in *People* at Langham Court, Jan is a Walterdale Theatre Lifetime Achievement Award recipient. Fringe circuit hits include *Four in the Crib*, *The Housekeeper*, *Bronte* and *Shirley Valentine*. Other credits include Sterling winner *Elizabeth the Queen*, Sterling Nominee *Treatment*, and *The Lion in Winter*. This is Jan's fourth Panto.



Pamela Holmes – *Landlady*

Pamela followed in her daughter's footsteps to this year's Panto, and after (almost) forgetting for some 30 years how much she loves the theatre, she's delighted to be treading the boards as the dire landlady in *Cinderella*. What a fabulous group of people to play with! Her mum would be proud.



Anabel Gibson – *Friend*

Anabel is excited to be performing with St. Luke's Players for the second time. This is her 3rd production on stage. Last winter, Anabel played Boo in *Aladdin*. Anabel enjoys singing, acting, making her own short films, and dancing. Enjoy the show!



Ariel Fischer – *Friend*

Ariel is a grade 6 student at Monterey Middle school and this is her first year performing in St. Luke's Players' Christmas Panto. Ariel enjoys dance and theatre, and plays the bass in her school band. Ariel is a Girl Guide and is committed to community service and cookie sales.



Ella East – Friend

Ella is 12 years old and excited to be performing in her second Panto with St. Luke’s Players! She enjoys taking musical theatre classes as well as participating in her school’s Concert Band, Jazz Band, Concert Choir and Vocal Jazz. She hopes you enjoy the show as much as she does!



Maria Smith – Friend

Maria is delighted to be singing and dancing in *Cinderella*, her third St. Luke’s Players’ Panto. When not on stage, she attends Cedar Hill Middle School, plays competitive fastball, loves to bake, and has developed a hidden talent for making potions and slime. She hopes you enjoy the show!



Olivia Bowyer-Smyth – Friend

Olivia is excited to take part in this year’s St. Luke’s Players’ Panto. She is a grade 7 student at Monterey Middle School and loves to perform. She is involved in the school drama club, choir and band. She plays the stand-up bass, electric bass, fiddle and the ukulele. Olivia enjoys singing and had a role in *Seussical the Musical* while living in Vancouver.



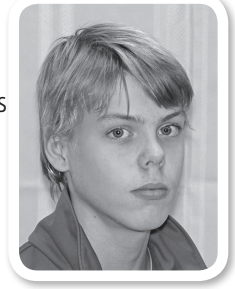
Violet Brownsey – Friend,

Violet is in grade 7 at Monterey Middle School. She plays basketball, trumpet and is on the swim team. This is her second Panto, having had a wonderful time with *Aladdin* last year. Violet is also preparing for her grade 5 RCM voice exam and the music festival. Enjoy!



Dexter Gilbert – *Daisy the Cow, Horse*

Dexter loves to perform and really enjoyed acting in the plays while at elementary school. Now, although he is in four choirs and two bands in his middle school, they don't offer drama so he is very excited to be able to perform in the St. Luke's Players Pantomime.



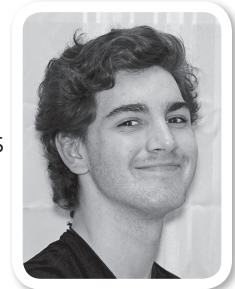
Marian Fischer – *Daisy the Cow, Horse*

Marian is a grade 8 student at Monterey Middle School and this is her third year performing in the St. Luke's Christmas Panto. Marian is an avid flutist who enjoys music and drama. When not performing Marian participates in many school activities and particularly loves creative writing.



Niko Batinovic – *DJ, Footman*

Niko says, "Hello everybody!" He was a stage hand for the last Panto and after much convincing he decided to audition for this Panto. After joining St. Luke's Players last year, he says that the SLP family has welcomed him with open arms. "Here's to the next one everybody."



Abbey Leahy – *Mouse*

Abigail is a ten-year old who was in "Joseph's amazing technicolour coat" and loves reading, singing, dancing and acting. She hopes to be in future plays.



Nyah Brown – *Mouse*

Nyah is a grade six student at Maria Montessori Academy. She has really enjoyed taking part in school musicals. This is her first Panto, which she is very excited about. Nyah also enjoys sports particularly running, gymnastics and riding her bike. Hope you enjoy the show!



Aisha Haq – *Mouse*

Aisha turns 11 on opening night of this year's Panto! She is excited to be in her first Panto. She played the lead role in the short film "Knot for Sale" in 2016. She enjoys taekwondo, hanging out with her cat Luna and her brother Cairo, playing board games and doing musical theatre camps.



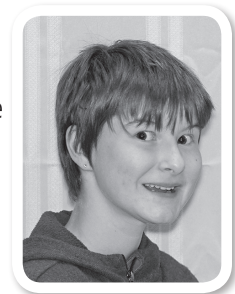
Lily Dow – *Mouse*

Lily is proud to be a cast member in her first Panto! Since moving from Salt Spring Island Lily has enjoyed being in the audience for the annual St. Luke's Players' Christmas Panto. This year when she saw this year's play was to be Cinderella, she immediately knew she wanted to play the part of a mouse and eagerly auditioned. Lily hopes everyone enjoys the performance!



Gemma Holmes Burnham – *Mouse*

Gemma is a fond fan of Harry Potter, pizza, ice cream and sleeping in. She adores acting and is 'pleased as Punch' to be a part of this year's production. Ever on the move, Gemma is already setting her sights on next year's Panto.



Many thanks to all of the wonderful volunteers who worked so hard designing, creating, building, promoting and organizing to help make this production successful.



Susan Nicholl
Stage Manager



Joel Gibson
Assistant Stage Mgr



Bronwyn Taylor
Co-producer



Vinnie Chadwick
Co-producer



Connie te Kampe
Music Co-director



Heather Lee
Music Co-director



Lia Collis
Choreography



Wendy Henderson
Costumes



Helena and Dave Hitchcock
Set Design



Blake Handley
Lighting Design



Mitch Barnes
Sound Design



Anne Swannell
Scene & Original Art



Jean de Cartier
Properties



Some of the awesome Production Team



ST. LUKE'S PLAYERS

COMMUNITY THEATRE SINCE 1948!

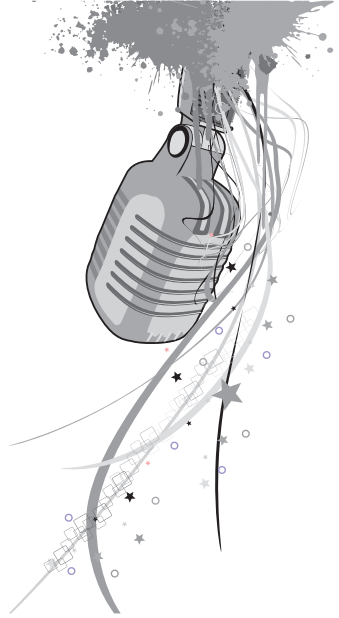
You must see the rest of our awesome 69th Season!

BEDTIME a comedy STORIES

written by **norm Foster**
directed by Merry Hallsor

Evening Performances 7:30pm
March 7, 8, 9, 10, 14, 15, 16 & 17

Matinee Performances 2:00pm
March 10, 11, 17 & 18



Murder Mystery

written by
Vera Casper & George Sklar
directed by Don Keith

Evening Performances 7:30pm
**May 16, 17, 18, 19,
20, 23, 24, 25 & 26**

Matinee Performances 2:00pm
May 19, 20, 26 & 27

"Laura" is presented by special arrangement with DRAMATISTS PLAY SERVICE INC.